

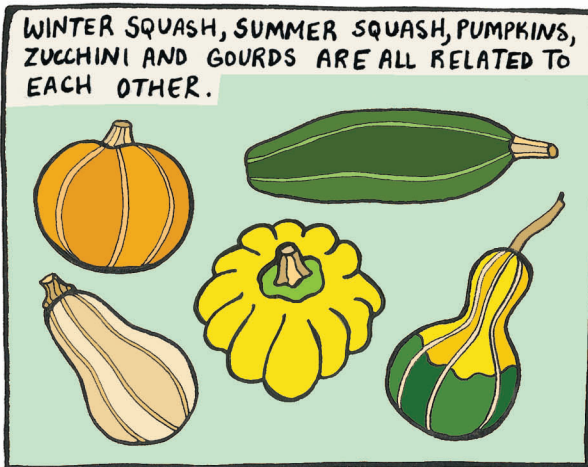
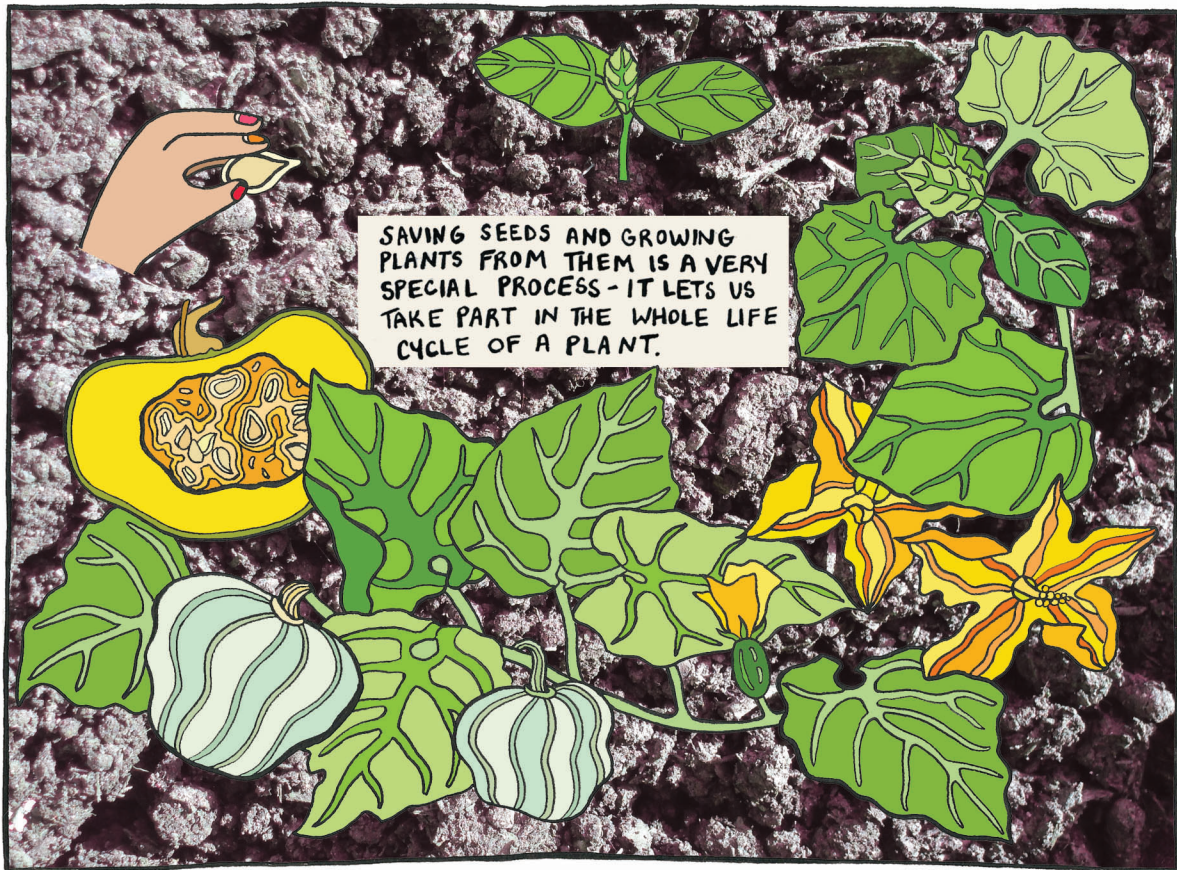
ADVENTURES #1 IN SEED SAVING

QUASSIA

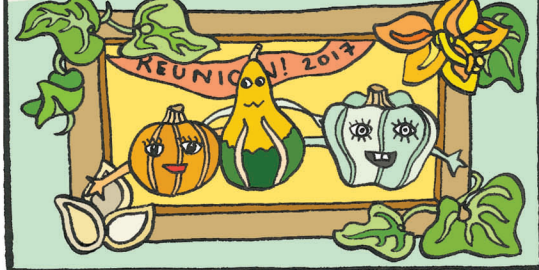
TRY THIS
AT HOME

WITH WINTER OR SUMMER
SQUASH, WATER MELON,
CANTALOPE, GOURDS, AND
MORE!

BY QUIN SHAKRA AND GODA TRAKUMAITĖ



CUCURBITA IS WHAT SCIENTISTS CALL A GENUS - THIS IS THE NAME OF THE FAMILY THAT ALL SQUASH, PUMPKINS AND GUARDS BELONG TO.



MAXIMA IS THE SPECIES. KABOCHA, NANTICOKE, QUEENSLAND BLUE + A FEW OTHERS SHARE THE SAME SPECIES NAME.



WHEN WE GROW THE SAME SPECIES OF SQUASH NEAR EACH OTHER, THEY CROSS.



SO IF YOU WANT THE SEEDS YOU SAVE TO BE THE SAME AS WHAT YOU STARTED WITH, GROW JUST ONE VARIETY AT A TIME.



EVEN THOUGH THE QUEENSLAND BLUE IS CALLED A WINTER SQUASH, IT NEEDS WARM WEATHER TO GROW.



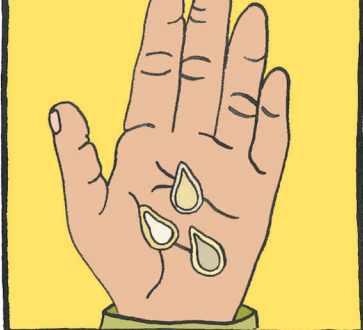
IT'S CALLED THAT BECAUSE DUE TO ITS THICK SKIN, IT CAN BE STORED FOR MANY MONTHS.



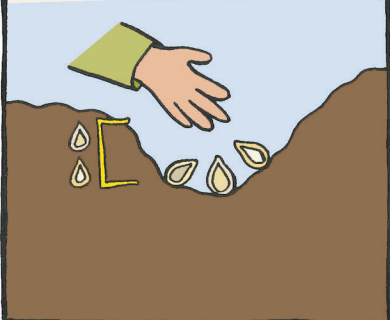
IN TEMPERATE REGIONS, YOU PLANT SQUASH IN LATE SPRING OR EARLY SUMMER, AND HARVEST THEM IN THE FALL.



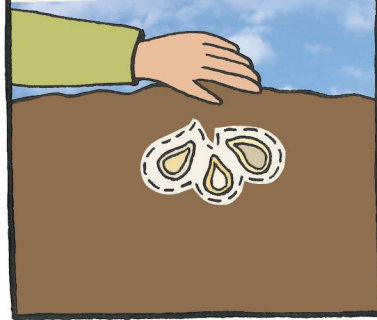
PLANT THREE SEEDS FOR EVERY PLANT YOU WANT TO GROW.



MANY GARDENERS SEED THEIR SQUASH DIRECTLY INTO THE GROUND.



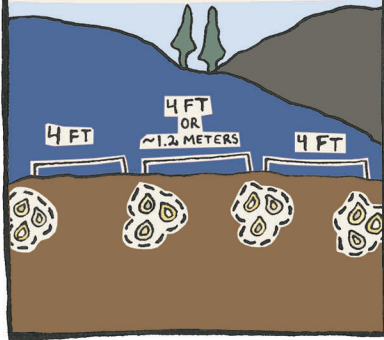
COVER THE SEEDS WITH SOIL AND GENTLY PAT DOWN THE AREA WITH YOUR HAND.



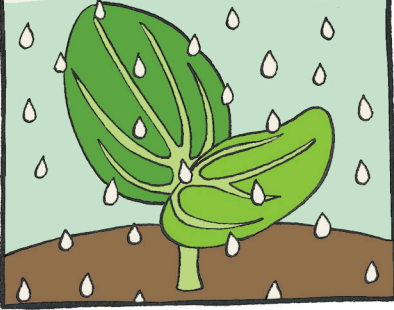
SQUASH PLANTS MAKE SPREADING VINES. MAKE SURE THEY HAVE ROOM TO TRAIL OUTWARDS OR SUPPORT TO CLIMB UP.



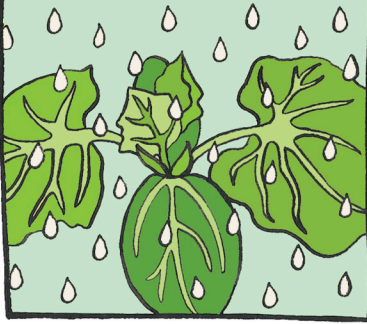
PLANT EACH PLANT AT LEAST 4 FEET APART FROM EACH OTHER.



KEEP YOUR BABY PLANTS WATERED FROM WHEN YOU PLANT THE SEEDS, THROUGHOUT THEIR EARLY LIFE.



THINK OF WATERING LIKE GIVING THE PLANTS A STEADY, GENTLE RAIN.



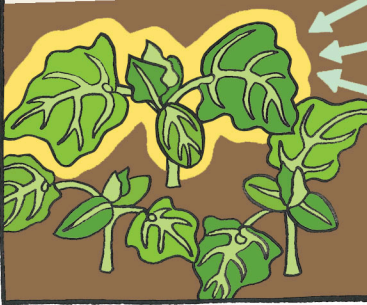
DON'T USE TOO POWERFUL A HOSE, BECAUSE THE FORCE COULD INJURE THE FRAGILE SEEDLING



IF ALL 3 SEEDS THAT YOU PLANTED SPROUT YOU'LL HAVE TO GET RID OF 2 OF THEM TO GIVE THE THIRD ONE ENOUGH SPACE.



LOOK FOR THE PLANT THAT SEEMS THE BIGGEST AND STRONGEST - THAT'S LIKELY THE HEALTHIEST, HAPPIEST ONE.



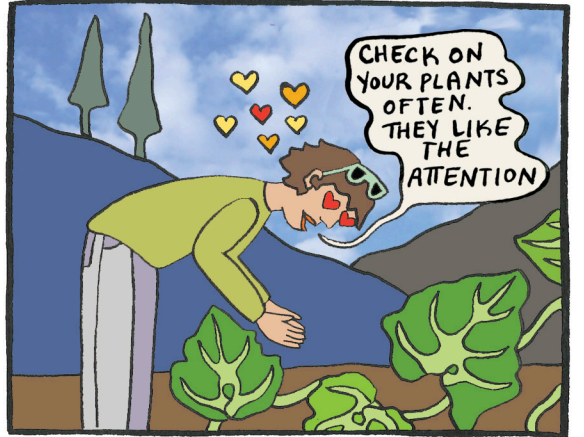
USE SCISSORS TO CAREFULLY CUT AWAY THE EXTRA PLANTS.



WATCH FOR CUCUMBER BEETLES AND SQUASH BUGS. BOTH CAN KILL YOUR PLANT IF LEFT UNCHECKED. YOU CAN PICK THE BUGS OFF BY HAND AND SQUISH THEM.



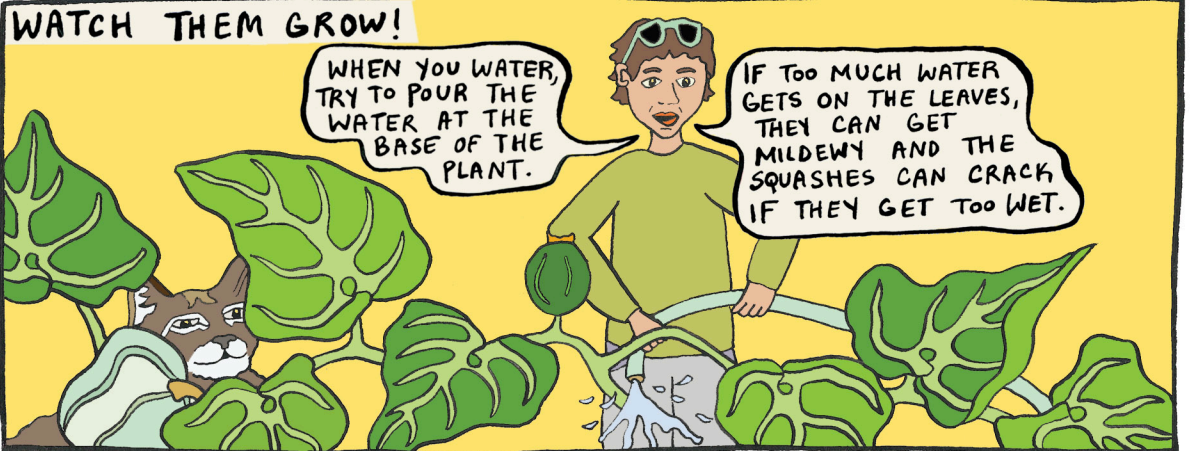
CHECK ON YOUR PLANTS OFTEN. THEY LIKE THE ATTENTION

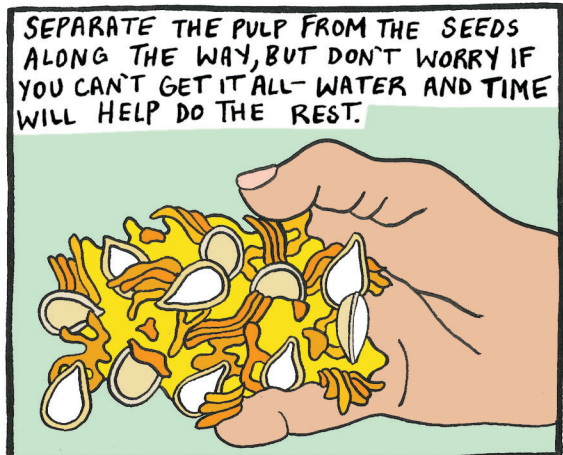
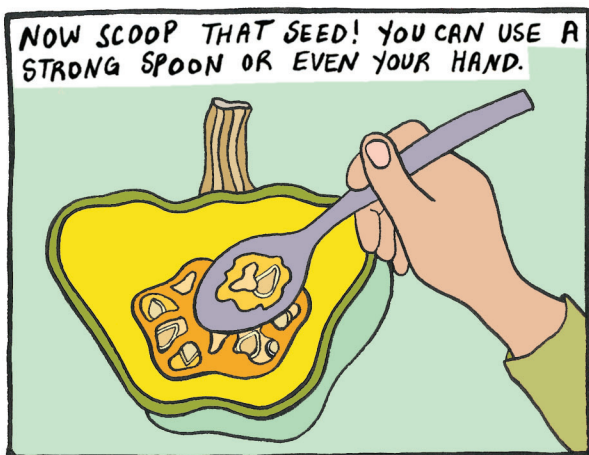
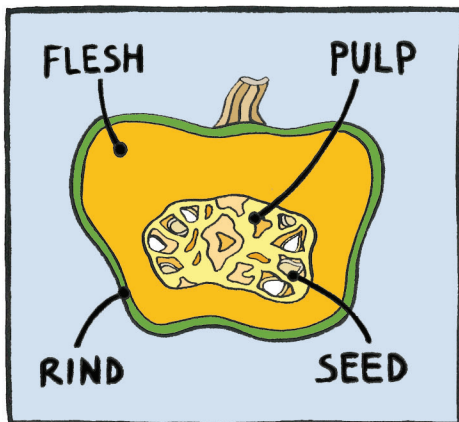
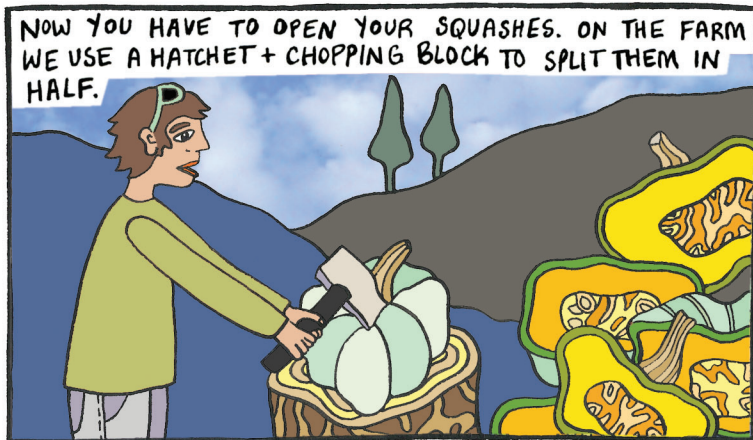
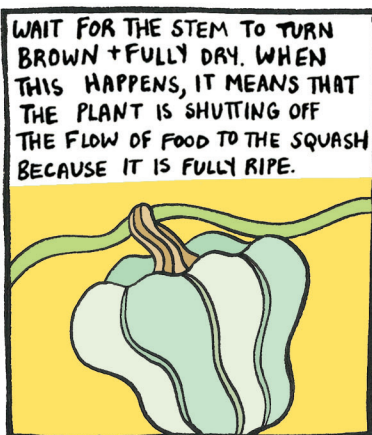


WATCH THEM GROW!

WHEN YOU WATER, TRY TO POUR THE WATER AT THE BASE OF THE PLANT.

IF TOO MUCH WATER GETS ON THE LEAVES, THEY CAN GET MILDEWY AND THE SQUASHES CAN CRACK IF THEY GET TOO WET.





ADD ENOUGH WATER TO YOUR SEEDS TO COVER THEM BY A COUPLE INCHES.



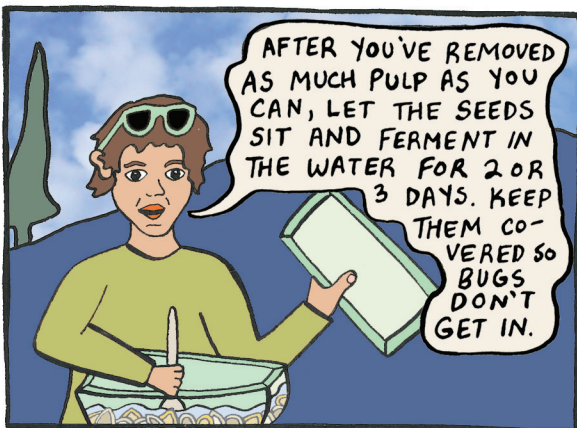
THEN GET YOUR HANDS IN THERE AND START SQUISHING!



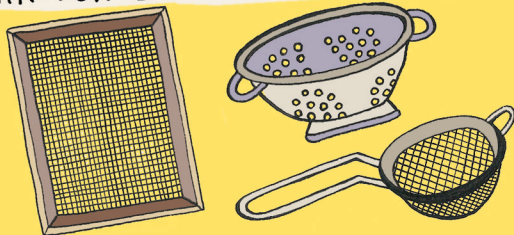
SEPARATE ANY PULP YOU CAN WITH YOUR HANDS + REMOVE IT FROM THE BUCKET. THIS WILL LEAVE SOME FILM ON YOUR HANDS.



AFTER YOU'VE REMOVED AS MUCH PULP AS YOU CAN, LET THE SEEDS SIT AND FERMENT IN THE WATER FOR 2 OR 3 DAYS. KEEP THEM COVERED SO BUGS DON'T GET IN.



AFTER A COUPLE OF DAYS, DRAIN THE WATER OFF. YOU CAN USE A KITCHEN COLLANDER, AN OLD WINDOW SCREEN, OR ANYTHING ELSE YOU HAVE AROUND THAT WILL LET THE WATER THROUGH BUT CATCH THE SEEDS.



NOW LET YOUR SEEDS DRY IN A WARM INDOOR AREA. YOU CAN DRY THEM ON A SCREEN OR ON A TRAY OR PLATE. SPREAD THEM OUT SO THEY DON'T GET MOLDY. TURNING THEM OVER BY HAND EVERY ONCE IN A WHILE WILL HELP THEM DRY WELL. SEEDS LIKE ATTENTION TOO!



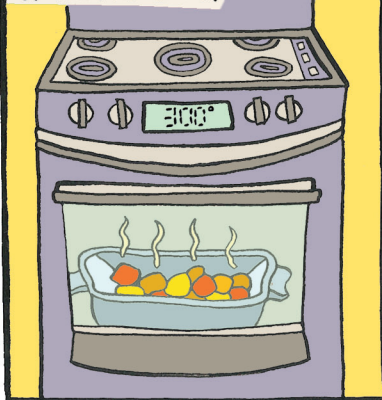
NOW MAYBE YOU HAVE A LOT OF SQUASH TO USE - SHARE IT WITH FRIENDS.



AND EAT IT! WE LIKE TO ROAST CHUNKS OF IT WITH A LITTLE BIT OF OIL + SALT.



YOU CAN BAKE IT AT 300°F UNTIL IT'S SOFT.



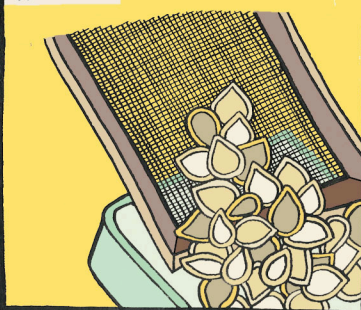
AFTER 3 OR 4 DAYS, YOU MIGHT NOTICE A TRANSPARENT HUSK SHINING ON THE SEEDS. RUB THEM TO SEE IF THE HUSKS COME OFF IN YOUR HANDS.



IF A LOT OF HUSKS COME OFF, IT MEANS YOUR SEEDS ARE STARTING TO GET DRY. OTHERWISE - WAIT A LITTLE LONGER.



ONCE YOUR SEEDS ARE DRY, POUR THEM INTO A CONTAINER.



RUN YOUR HANDS THROUGH THE DRY SQUASH SEEDS, LIGHTLY RUBBING THEM TOGETHER. THIS WILL MAKE A NICE SOUND.

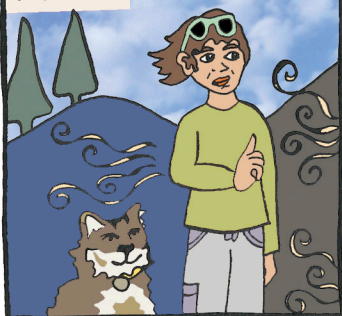


AFTER A WHILE YOU'LL HAVE A LOT OF CHAFF

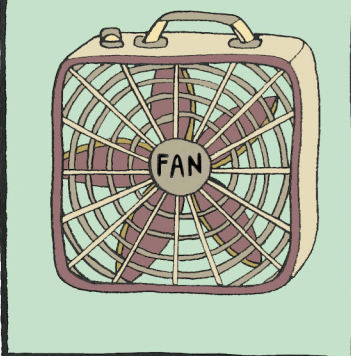
YOU COULD JUST STORE THEM LIKE THIS, BUT REMOVING THE CHAFF HELPS MAKE SURE THAT YOUR SEEDS STORE WELL AND DON'T GET MOLDY



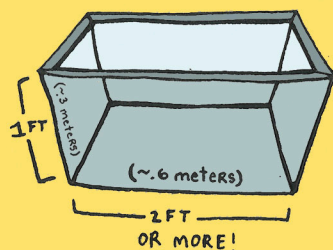
TO GET RID OF THE CHAFF YOU WILL NEED A LIGHT WIND...



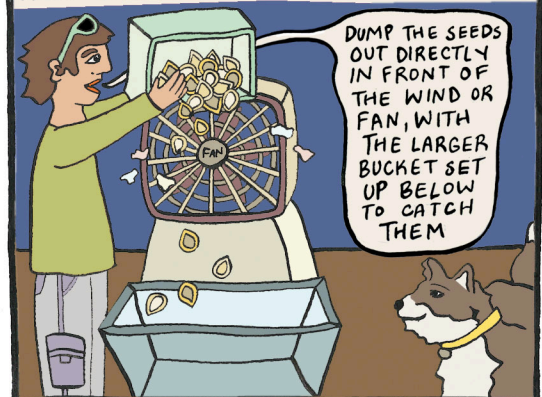
OR A FAN.



FIND ANOTHER CONTAINER. MAKE SURE IT'S LARGE ENOUGH TO CATCH THE SEEDS BECAUSE YOU'LL BE POURING IT FROM UP HIGH.



TURN THE FAN ON A LOW SETTING, OR WORK WITH THE BREEZE TO YOUR BACK.



DUMP THE SEEDS OUT DIRECTLY IN FRONT OF THE WIND OR FAN, WITH THE LARGER BUCKET SET UP BELOW TO CATCH THEM

GENTLY SHIFT THE SEED CONTAINER BACK AND FORTH AS YOU DUMP OUT THE SEEDS. THE CHAFF SHOULD FLY IN THE AIR AS THE SEEDS FALL INTO THE BUCKET BELOW.

