

#2 ADVENTURES SEED ^{IN} SAVING

TOMATO

BY GODA TRAKUMAITE WITH QUIN SHAKRA



1. CHOOSE THE TOMATO

THE TOMATO PLANT ORIGINATED IN THE MOUNTAINS OF WESTERN SOUTH AMERICA.



ITS COMPACT WAY OF GROWING MEANS IT IS EASY TO GROW IN MANY DIFFERENT KINDS OF PLACES.



YOU ALSO ONLY NEED A SINGLE PLANT TO GET VIABLE SEED* FROM WHICH YOU CAN GROW MORE TOMATOES IN THE FUTURE.



PERFECT FLOWER

JUST MAKE SURE TO PICK AN OPEN-POLLINATED AND NOT A HYBRID TOMATO TO WORK WITH UNLESS YOU ARE READY FOR SOME UNPREDICTABLE RESULTS.



IT'S BEST TO GROW A KIND OF TOMATO THAT YOU REALLY LIKE—MAYBE IT'S VERY DELICIOUS, OR SPECTACULARLY BEAUTIFUL, OR HAS A STORY THAT IS MEANINGFUL TO YOU.



* LEARN MORE ABOUT THE UNDERLINED WORDS IN THE GLOSSARY ON THE BACK OF THIS BOOKLET.

2. GROW THE TOMATO

START YOUR SEEDS INDOORS, A MONTH AND A HALF OR SO BEFORE TRANSPLANT TIME.



KEEP THE LITTLE PLANT WATERED IN A WARM SUNNY SPOT,



AND THEN PLANT IT OUTSIDE SAFELY AFTER THE LAST FROST.



BE READY TO TRELLIS YOUR PLANT IN SOME WAY. MANY TOMATOES GET TALL & UNWIELDY, AND MAKE HEAVY FRUIT THAT CAN BREAK THEIR BRANCHES.



UNLESS YOU ARE GROWING DETERMINATE TOMATOES, YOU MIGHT WANT TO PRUNE YOUR PLANT.



GET RID OF SUCKERS TO CREATE AIR FLOW + PREVENT DISEASE

REMOVE ANY LEAVES THAT ARE TOUCHING THE GROUND

WATCH YOUR PLANT GROW & FORM FRUITS. SOON YOU'LL BE ABLE TO HARVEST THEM FOR FOOD AND SEED.

3. HARVEST FOR SEED

IF YOU JUST WANT TO SAVE SEEDS FOR YOURSELF AND A FRIEND OR TWO, YOU'LL ONLY NEED A COUPLE TOMATOES.



EACH ONE HAS MANY SEEDS.

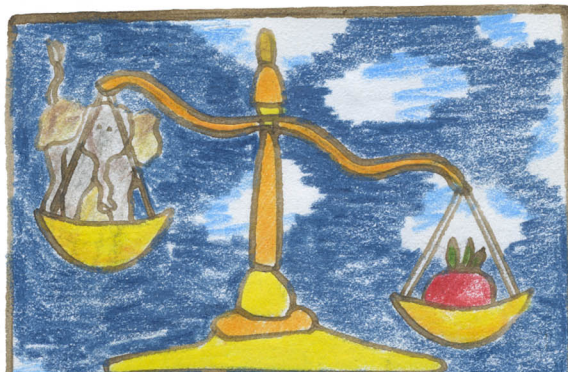
PICK THE ONES THAT FEEL MOST "IDEAL" TO YOU, SO THAT THE TRAITS YOU LIKE GET PASSED ON TO YOUR FUTURE PLANTS.



MAKE SURE YOU HARVEST THEM WHEN THEY ARE FULLY RIPE. YOU CAN TELL THEY'RE READY WHEN:



THE TOMATO IS SOFT,



HEAVY,



HAS A BRIGHT COLOR (NO MORE GREEN ON IT UNLESS YOU PICKED A GREEN VARIETY),



IS STARTING TO SPLIT OPEN.

4. CLEAN THE SEED

METHOD 1:

CUT THE TOMATO OPEN THIS WAY:



SCOOP OUT THE SEEDS (AND THE GOO THAT SURROUNDS THEM) INTO A BOWL.



BANG THE TOMATO AGAINST THE SIDE OF THE BOWL TO GET ANY REMAINING SEEDS OUT.



METHOD 2:

IF YOU WANT TO SAVE LOTS OF SEEDS FROM MANY TOMATOES, IT MIGHT BE FASTER TO CUT A CORE OUT OF THE CENTER OF YOUR TOMATO,



AND SQUISH THE WHOLE THING INTO YOUR BOWL.



WHICHEVER WAY YOU CHOOSE (AND MAYBE YOU'LL MAKE UP YOUR OWN METHOD), GET IN THERE WITH YOUR FINGERS AND MUSH EVERYTHING AROUND UNTIL YOUR TOMATO MASS LOOKS LIKE SOUP.

BEFORE



AFTER



YOU CAN ADD A TINY BIT OF WATER IF THAT HELPS TO MUSH EVERYTHING.

ONCE YOUR SEED/GEL MIXTURE IS PROPERLY MUSHED, COVER WITH A CLOTH AND LET IT SIT FOR 3-5 DAYS



WHAT'S HAPPENING IN THE BOWL IS CALLED FERMENTATION - A PROCESS THAT REMOVES THE GEL COATING FROM EACH SEED



THIS PROCESS CAN GET A LITTLE STINKY, SO IT'S GOOD TO LEAVE THE BOWL OUT-DOORS IF YOU CAN.



YOU CAN STIR THE MIXTURE EVERY ONCE IN A WHILE TO HELP MOVE THINGS ALONG.



IF YOU USED METHOD 1, YOU CAN NOW MAKE SOME SALSA OR PASTA SAUCE OR SOMETHING ELSE DELICIOUS FROM YOUR SMUSHED TOMATO REMAINS.



AFTER 3-5 DAYS, YOUR MUSH SHOULD BE A BIT MOLDY + STINKY.



POUR IT INTO A LARGER BOWL, AND ADD SOME WATER.



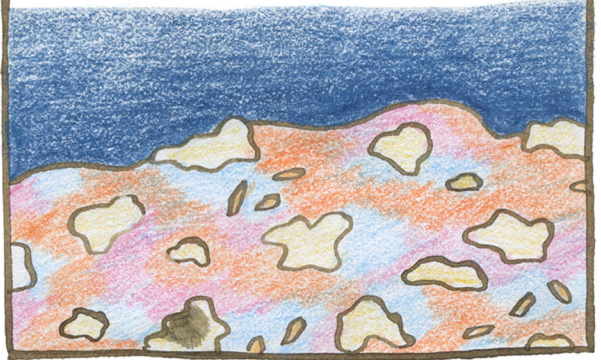
USE YOUR HANDS TO SEPARATE ANY PULP + GEL THAT IS STILL STUCK TO THE SEEDS.



LET THE SEEDS SETTLE AT THE BOTTOM OF THE BOWL, AND THEN POUR THE WATER + PULP OFF SLOWLY WHILE KEEPING THE SEEDS IN THE BOWL.



IT'S OK IF SOME SEEDS COME OUT TOO, THEY ARE LIKELY THE LIGHTEST + LEAST VIABLE ONES.



REPEAT THIS PROCESS OF ADDING MORE WATER + DECANTING A FEW MORE TIMES, UNTIL YOUR SEEDS LOOK CLEAN.

ONCE THE SEEDS LOOK CLEAN, POUR THEM THROUGH A STRAINER + GIVE A FINAL RINSE.



THEN LAY THEM OUT TO DRY FOR A FEW DAYS ON A BROWN PAPER BAG.



ONCE THEY ARE DRY, PUT THE SEEDS IN A LITTLE JAR OR BAG AND LABEL IT.



GLOSSARY

DECANTING - POURING OFF + DRAINING THE NON-SEED PARTS OF THE SEED MUSH.

DETERMINATE TOMATOES - THEY GROW TO A FIXED SIZE (USUALLY 2-4 FEET) + MAKE FRUITS THAT RIPEN ALL AT ONCE. AN INDETERMINATE TOMATO CAN GROW AS TALL AS YOU GIVE IT SPACE AND SUPPORT FOR + MAKES FRUITS THROUGH THE SEASON.

FERMENTATION - PROCESS THAT CREATES HEAT, WHICH REMOVES THE OUTER LAYER OF THE SEED.

GEL COATING - THE NATURAL MATERIAL OUTSIDE OF THE SEED THAT PREVENTS IT FROM SPROUTING IMMEDIATELY SO IT DOESN'T TRY TO GROW WHEN IT'S TOO COLD.

HYBRID - PLANTS BORN FROM SPECIFIC PLANT PARENTS, POLLINATED BY PEOPLE IN A CONTROLLED ENVIRONMENT. THEY CAN PRODUCE VIABLE SEED, BUT MAY NOT LOOK LIKE WHAT YOU STARTED WITH.

LAST FROST - THE AVERAGE FINAL FREEZE IN YOUR AREA. IT OCCURS IN SPRING IN MOST TEMPERATE REGIONS OF THE WORLD.

OPEN POLLINATED - PLANTS THAT MAKE SEEDS WHEN WIND OR CRITTERS (HUMANS INCLUDED) MOVE POLLEN BETWEEN THEIR FLOWERS. THESE KINDS USUALLY "SAVE TRUE," MEANING YOU'LL GET A SIMILAR PLANT TO THE ONE YOU SAVED SEEDS FROM.

PERFECT FLOWER - A SINGLE FLOWER WITH ALL THE PARTS IT NEEDS TO MAKE SEEDS - NO POLLEN FROM OTHER FLOWERS NECESSARY!

PRUNING - CUTTING OFF SOME PARTS OF A PLANT TO HELP IT GROW IN A HEALTHY WAY.

SUCKERS - A SMALL PLANT SHOOT THAT FORMS FROM THE POINT BETWEEN THE MAIN STEM AND BRANCH. FRUITS WON'T GROW FROM IT.

TRELLIS - SOMETHING THAT SUPPORTS YOUR PLANTS.

VIABLE SEED - SEEDS THAT WILL SPROUT EASILY!



ISBN 978-1-7923-8453-0
50699>



9 781792 384530